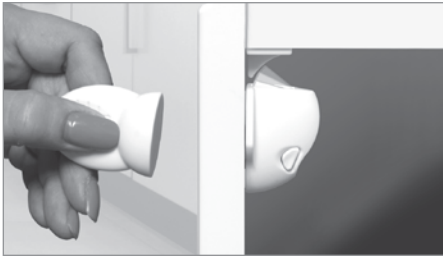


# ADHESIVE MAG LOCK®

PATENTED



**To Use:**  
To open door place Key **D** over Lock **B**.

**To Remove:**  
Use rubber cement solvent, eucalyptus oil, or similar type of product.



For added strength, install Catch **C** and Lock **B** with 4g screws 2.85mm (1/8in) x 14mm (1/2in) length - pan head (screws not included)

## PARTS

- A** Re-usable Template (clear plastic).  
The installation template may not always be suitable for use on drawers.
- B** Lock
- C** Catch
- D** Key



**A**



**B**



**C**



(not included in F858)

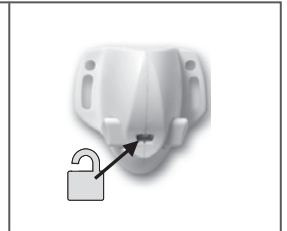
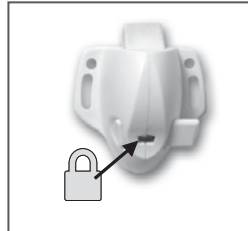
**D**



**GREEN - ACTIVATED**



**RED - DEACTIVATED**



The Disengaging Feature will allow the Lock to be de-activated for extended periods of time.

Keep instructions for future reference.


**IMPORTANT:** Store Magnetic Key out of reach of children. The Key is a very powerful magnet so keep away from ELECTRICAL SOURCES, COMPUTERS, CELL PHONES, CREDIT CARDS etc.

**WARNING:** There is no substitute for proper adult supervision. This product is only a deterrent. Discontinue use when child is able to open it. All dangerous and toxic substances, sharp edged or pointed objects, should always be kept "high up" or in a totally inaccessible area to children.

Look for the Dreambaby® range of Child Safety and Care Products.

Tee-Zed acknowledges that its customers may be entitled to statutory consumer guarantees and does not seek to exclude or limit them. These guarantees include that Tee-Zed's products are of acceptable quality. This Tee-Zed product is for the specific purpose detailed in the instructions and packaging and Tee-Zed considers use outside of that purpose to be abnormal use. To the maximum extent permitted by law, Tee-Zed does not accept any liability for damage:

- arising from abnormal use of the products;
- caused by installation or removal of the products other than in accordance with the supplied installation and removal instructions; or
- arising under the law of tort or contract.

Dreambaby® products by 

Tee-Zed Products Pty Ltd  
PO Box 2022, Bondi Junction NSW 1355  
**Australia** ☎ +61 (0)2 9386 4000  
✉ info@tee-zed.com.au  
[www.dreambaby.com.au](http://www.dreambaby.com.au)

Tee-Zed Products (N.Z.) Ltd  
PO Box 64013, Botany Town Centre Auckland  
**New Zealand** ☎ +64 (0)9 274 8788  
✉ info@tee-zed.co.nz  
[www.dreambaby.co.nz](http://www.dreambaby.co.nz)

Tee-Zed Products Ltd  
PO Box 29227, Dunfermline, KY12 2DN  
**United Kingdom** ☎ +44 (0)844 800 9445  
✉ info@tee-zed.co.uk  
[www.dreambaby.co.uk](http://www.dreambaby.co.uk)

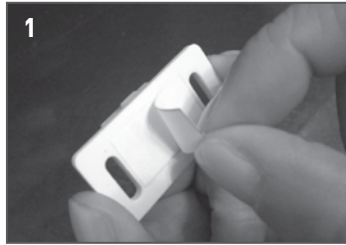


# Installation

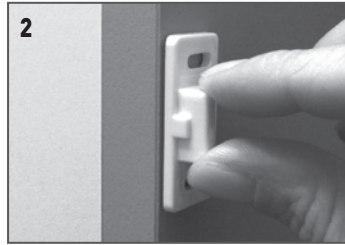
## Installation steps - Read all steps before starting.

The Template **A** has been designed to help you install your Adhesive Mag Lock® in most cabinets. It is recommended that, before any holes are drilled, you confirm the best place for your lock. The installation template may not always be suitable for use on drawers.

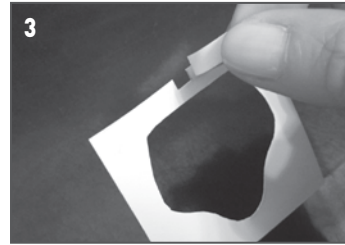
Installation will depend on your cabinet and drawer construction, as possible mounting positions will vary from style to style. Some cabinets have bumper pads, additional adjustments may be required when installing.



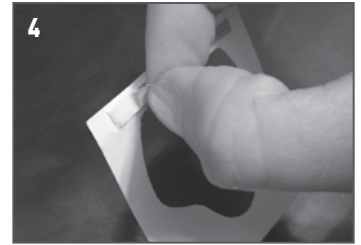
- 1. Decide on the best position for your Adhesive MagLock®.
- 2. Thoroughly clean and dry surfaces.
- 3. Peel off the backing paper from the Catch **C**.



- 4. Gently apply Catch **C** into position (do not press Catch firmly into place at this stage).



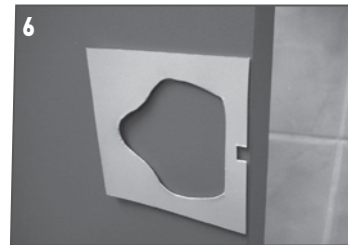
- 5. Peel the adhesive backing strip from the Template **A**.



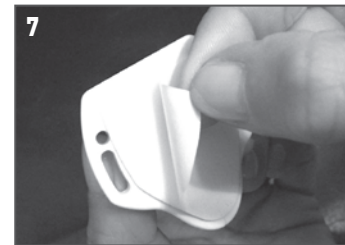
- 6. Peel off the backing paper from foam tape on other side of Template **A**.



- 7. Line up Template **A** to catch with foam adhesive facing out. Press to stick Template **A** to catch.



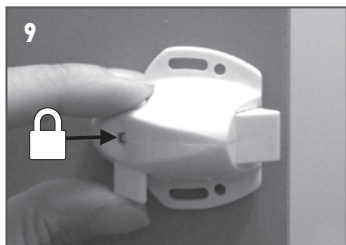
- 8. Close door firmly and fully onto the foam tape.
- 9. This will transfer the Template **A** to the correct location on the inside of doors or drawers.



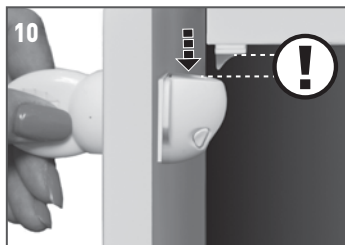
- 10. Disengage Lock **B** by moving to "red" position and peel off the adhesive backing.



- 11. Gently place the Lock **B** into position using the Template **A** as a guide (do not press Lock firmly into place at this stage).



- 12. Remove the Template **A** and engage the Lock **B** (green).

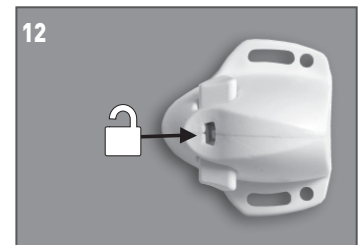


- 13. **! BEFORE CLOSING DOOR** Use Magnetic Key **D** to check that the Lock **B** and Catch **C** are aligned and working.

- 14. If they are not catching, gently peel away and reposition.



- 15. When the Catch **C** and Lock **B** align, apply firm pressure to all parts.



- 16. Disengage Lock **B** (red) to allow entry to cupboards while tape is setting.
- 17. **Leave for 48 hours to allow adhesive to fully set.**