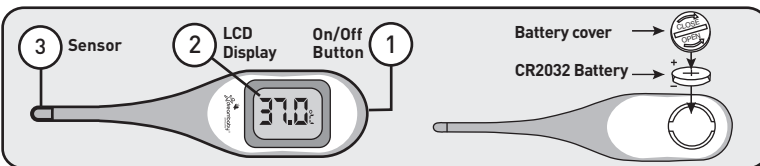




## Rapid Response Digital Thermometer

Important: Keep instructions for future reference.  
Read INSTRUCTIONS thoroughly before using this product.

**F320**



### Features

- Extra large easy to read digital display.
- Accurate temperature reading.
- Oral reading in 8 seconds (can vary for underarm and rectal reading).
- Fever Alert light up indicator - display panel will turn red if fever is detected and green if a normal temperature.
- Flexible tip for comfort.
- Case for hygienic storage.
- Does not contain mercury.
- Long life battery.
- Celsius and Fahrenheit.
- Temperature range 32.0 – 42.9°C (90.0 – 109.4°F).

### To Use

1. Lightly press ON / OFF button to turn on.
2. "Lo"°C will flash 3 times on digital display.

3. To take temperature:

#### Under the armpit-

Position tip of sensor under the (unclothed) armpit and hold securely till tone is heard. Keep child still as movement may affect accuracy of temperature reading.

#### Under the tongue-

Place tip of **Sensor** under the tongue, close mouth and breathe through nose. Hold securely until beep is heard. Digital display will show temperature.

#### Rectally-

Gently insert ONLY tip of sensor into rectum (coat tip with Petroleum Jelly to make insertion easier) and hold securely till tone is heard.

#### Normal Reading

If the temperature is **below 37.6°C (99.7°F)** a tone will be signalled and a **GREEN** backlight will appear on the **Display Panel**.

#### Fever Reading

If the temperature is **above 37.6°C (99.7°F)** a rapid tone will be signalled and a **RED** backlight will appear on the **Display Panel**.

If this occurs seek medical advice.

#### Button

To save power, this thermometer will automatically switch off. Turn off the unit by just lightly pressing power.

#### Memory Function

The next time you use the thermometer the previous temperature reading will show when you turn power on with **Button**.



#### Changing Celsius and Fahrenheit

Press Button to turn unit on. The **Display Panel** will show either "Lo°F" or "Lo°C" depending on current setting. Lightly press Button again and °F will change to °C and visa versa.

#### Tips for taking Temperature

For the most accurate reading keep the room environment between 16°C – 31°C (61°F – 88°F). To maintain the accuracy of each measurement, wait at least 3 minutes before another measurement is taken.

#### To Clean

Clean sensor tip before each use. Do not submerge the thermometer in cleaning liquid. Use cloth dipped in cool soapy water to wipe clean. To clean, wipe tip using soft cloth with surgical alcohol. Never dip tip directly into alcohol. Do not use any other cleaning chemicals.