

MAG LOCK®

Components (Mag Lock® Key not included in F153 or F154)

A. Installation Templates

B. Mag Lock®

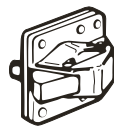
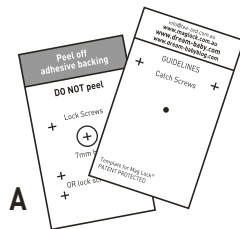
C. Catch

D. Mag Lock® Key

E. Plunger Pin

F. Disengaging Clip

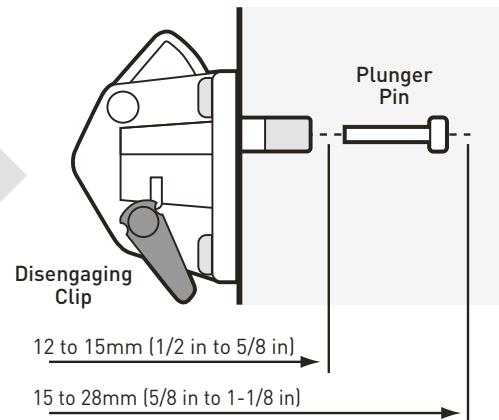
G. 12mm (1/2 in) Screws



Door Thickness

Door Thickness	Lock Configuration (refer to diagram to right)
12 to 15mm (1/2 in to 5/8 in)	Omit Plunger Pin
15 to 28mm (5/8 in to 1-1/8 in)	Use Plunger Pin

Lock Configuration not drawn to scale



Look for the Dreambaby® range of Child Safety and Care Products.

Tee-Zed acknowledges that its customers may be entitled to statutory consumer guarantees and does not seek to exclude or limit them. These guarantees include that Tee-Zed's products are of acceptable quality. This Tee-Zed product is for the specific purpose detailed in the instructions and packaging and Tee-Zed considers use outside of that purpose to be abnormal use. To the maximum extent permitted by law, Tee-Zed does not accept any liability for damage:

- arising from abnormal use of the products;
- caused by installation or removal of the products other than in accordance with the supplied installation and removal instructions; or
- arising under the law of tort or contract.

Dreambaby® products by 

Tee-Zed Products Pty Ltd, PO Box 2022, Bondi Junction NSW 1355
Australia Tel: (02) 9386 4000

Tee-Zed Products (N.Z.) Ltd, PO Box 64013, Botany Town Centre Auckland
New Zealand Tel: (09) 274 8788

Tee-Zed Products Ltd, PO Box 29227, Dunfermline, KY12 2DN
United Kingdom Tel: +44 (0)844 800 9445
info@tee-zed.co.uk

Made in Dongguan, China.

©2014 Tee-Zed Products Pty Ltd



info@tee-zed.com.au
www.maglock.com.au
www.dreambaby.co.uk
www.dreambaby.com.au
facebook.com/Dreambabysafety

For cabinet doors thicker than 28mm (1-1/8 in), please email us at info@tee-zed.com.au

Please keep instructions for future reference.

CAUTION: This product contains very powerful magnets. Do not place near CREDIT CARDS, CD's, VIDEOS, TAPES etc. When installing MAG LOCK® or when it is in use, ensure that it does not make contact or come close to electrical sources, wire mesh racks, or metal canned goods.

Installation steps Read all steps before starting.

The templates have been designed to help you install your Mag Lock® in most standard cabinets and drawers (both top and bottom drawers). It is recommended that, before any holes are drilled, you confirm the best place for your lock.

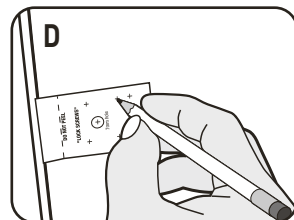
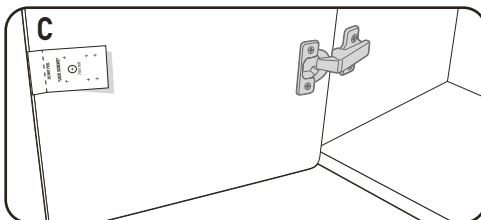
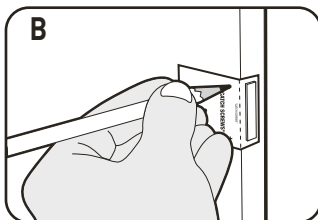
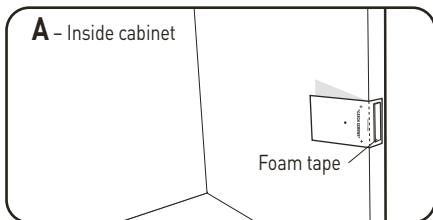


Figure A & B

- Decide on the best position for your Mag Lock®. (Installation will depend on your cabinet and drawer construction, as possible mounting positions will vary from style to style).
- Peel the narrow adhesive backing strip from the Installation Template "Lock Screws" side.
- Position the Template (as shown in A) on the cabinet wall or drawer cabinet wall and use sharp pencil or nail to mark "Catch" hole locations (2 arrows).
- Now peel backing from foam tape.

Figure C & D

- Close door firmly and fully onto the foam tape.
- Some cabinets have rubber pads in the corners. Remove these for this step and then reinstall.
- This will transfer the Template to the correct location on the inside of doors or drawers.
- Open the door, hold Template steady and mark 4 "Lock Screw" locations (4 arrows).

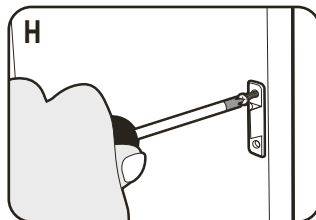
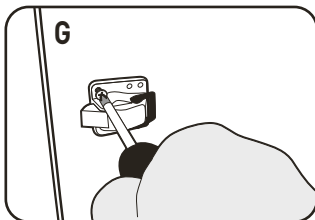
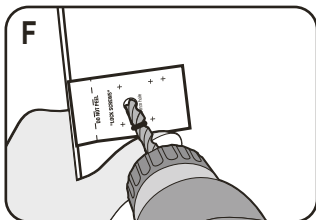
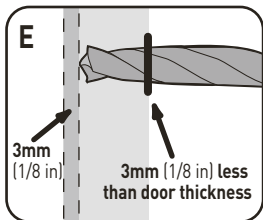


Figure E & F

USE CAUTION. DO NOT DRILL ALL THE WAY THROUGH DOORS OR DRAWERS.

- Measure the door/drawer thickness and make a mark 3mm (1/8 in) less than the door/drawer thickness on the 7mm (9/32 in) drill bit (E).
- DRILL WITH CAUTION:
Start drilling carefully into 7mm (9/32 in) hole on Template (F) and ensure to stop drilling at mark drawn on drill bit.
The drilled hole will now be 3mm (1/8 in) from the front of door/drawer.
- The hole must be clean and free from all debris.

Figure G & H

- Refer to 'Door Thickness' table & diagram on front page, to see if plunger pin is required.
- Match "Catch" over the 2 holes where previously marked (A). Install 12mm (1/2 in) Screws (Drill holes with hand/cordless drill-optional using 1.5mm (1/16 in) drill bit). Screw in loosely so adjustment can be made later if required. Match Lock into 7mm (9/32 in) hole and align over the 4 holes (B) marked previously and screw into place with four 12mm (1/2 in) Screws.
- A pair of auxiliary holes is provided for use if necessary.
- Close door and open using Mag Lock® Key.
- When catch is properly positioned, screw firmly into place.

Tools required for installation

- #1 Phillips Head screwdriver
- Hand/Cordless drill (non-electric)
- Sharp pencil or nail
- 7mm (9/32 in) drill bit
- Optional 1.5mm (1/16 in) drill bit

Disengaging Clip

- The Disengaging Clip will allow the Lock to be de-activated for extended periods of time.
- Always be sure to reactivate the Lock by pushing the Disengaging Clip down again.
- Install the Disengaging Clip in the hole on one side, with "UNLOCK" letters up, then straddle the lock housing and position on the opposite side. This Clip is not meant to be overstretched. Test that Disengaging Clip has been positioned correctly or it may need to be reversed.
- If not intending to use the disengaging facility, it is not necessary to install Disengaging Clip.
- However, keep Disengaging Clip and store in a safe place, out of reach of children.